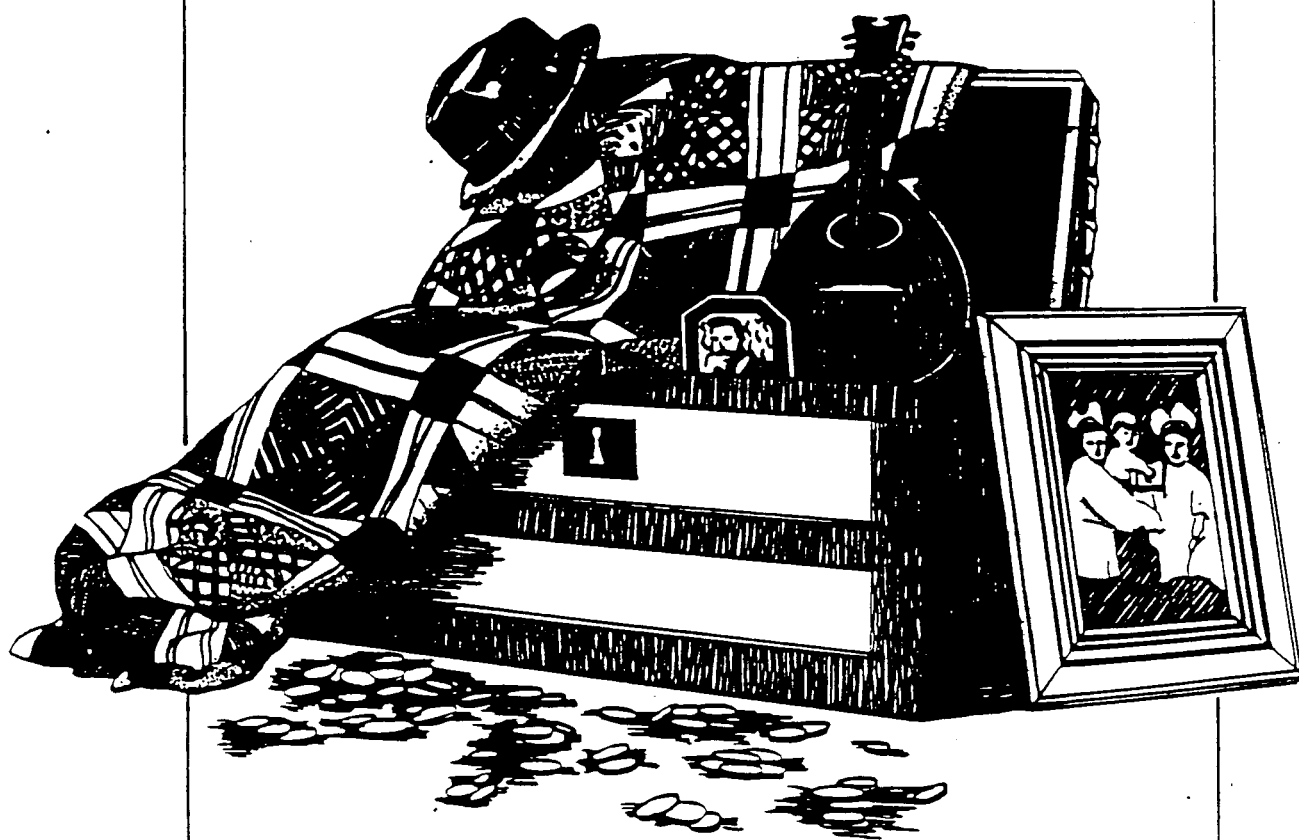


Buried Treasures



Volume XXVI, No. 4
October - December 1994

CENTRAL FLORIDA GENEALOGICAL
SOCIETY, INC.

TABLE OF CONTENTS

President's Message	ii
Discovered in South Carolina	72
PRESTON Connection in Salvisa, Kentucky, A	73
"Miracle of the Bell"	73
KELLYs of Lowndes and Their Cousins <i>[Book Review]</i>	74
Researching in Virginia	75
My Daughter's First Car	77
1911 Ford Advertisement - Model T	77
1926 Ford Advertisement - Touring / Runabout / Coupe	78
Spirits in the Moonlight	79
History of Warren County, Ohio, The <i>[Book Review]</i>	81
Henry HAYMAN Declaration	82
Patriots at the Cowpens, The <i>[Book Review]</i>	83
For the Want of a Map; A Reader was Lost	84
Queries	86
Recent Acquisitions - Orlando Public Library	88
Geographical Index	92
Surname Index	93

FALL CONTRIBUTORS

Alice Creel Ball
 Anne Hammond Connell
 Richard A. Connell
 Maude Hayman
 Dr. George G. Miles

Ann Mohr Osisek
 Ervin Patrick
 Charles W. Siddaway
 Bettye Jo Williams
 William Rhea Williams



Central Florida Genealogical Society, Inc.
P. O. Box 177
Orlando, Florida 32802-0177

December 1994

Dear Members and Friends:

We trust that all our members and readers enjoy this holiday season, which is the perfect opportunity to collect family stories and share our current research projects. Our speakers this season reflect our goal of providing you with information that will help you become more skilled genealogists. We hope you have enjoyed them so far and the upcoming months should be just as special. Thank you for your speaker and program suggestions, It is essential that we hear from you about what YOU want for programs.

The Society continues to take a leadership role in the struggle to reinstate genealogy as a department at the Orlando Public Library and to return all the materials to one location. Your continued attendance at library board meetings and correspondence to newspapers and local government representatives are having an affect. We are actively pursuing the relocation issue by our representation on the library's genealogy advisory committee. Again, thank you for your support and participation.

For 25 years this organization has worked diligently to encourage genealogical research, member to member sharing and provide education opportunities to help members develop their skills. Each person who has been a part of this opportunity was a volunteer. As you look into your resolutions for the new calendar year, please include supporting the Central Florida Genealogical Society with your personal participation.

Happy Holidays,

Marilyn Kangelos*
President

Editor's Note: This message has been written posthumously
on behalf of President Kangelos.

DISCOVERED IN SOUTH CAROLINA
(A County with continuous records dating back to 1785)

Barnwell County (formerly Winton and later Barnwell District), South Carolina is rare among South Carolina Counties in that it has today a continuous set of records dating back to 1785 when it was formed. Emily **BELLINGER REYNOLDS** and Joan **REYNOLDS FAUNT** tell how this happened in a history of the Barnwell County Court House they wrote many years ago for the local newspaper. The story in their words:

In February, 1865, when Sherman's army swept across the state, "KILPATRICK's cavalry made sad havoc of the beautiful grounds and flower gardens of Barnwell," according to Col. W. H. DUNCAN, an eyewitness to the destruction whose account has been preserved. "Horses were corralled in the front yards and fed and stabled in the basements of some of the houses. Many dwellings and all offices and public buildings had been ruthlessly burned." The night that this was done was "a dark but starlit night in February, 1865, and the flames from the burning buildings lit up the heavens for miles." The courthouse, of course, was lost.

Court records for Barnwell were saved through the foresight of A. V. EAVES, Clerk of Court, Sheriff Willis W. WOODWARD and others, who helped get the records away to safety. Great credit is due these patriotic citizens, as all papers were lost in the surrounding counties along Sherman's march, being burned when the public buildings were destroyed. The Barnwell County records, including the original Winton County minute book, were returned to Barnwell in February, 1866.

In the years 1732 to 1735, Swiss, Irish, German, German-Swiss and Welch immigrants from the northern colonies settled in the area that was later to become Barnwell County. The Barnwell records are vitally important to genealogists researching the descendants of these early settlers.

by William R. & Bettye Jo **WILLIAMS**

A PRESTON CONNECTION IN SALVISA, KENTUCKY

Several months ago while going through some pictures of my wife's family, I came upon a photograph of one Ernest PRESTON taken in Salvisa, Kentucky in 1952. Not knowing how this fellow fit into the family picture, I took a chance and wrote a letter to the postmaster in that town. We know the post office is not permitted to disclose information but the hope was that perhaps he may pass on the request to a living relative in the area. Imagine our surprise, when a week later, we received a telephone call from an Amalie PRESTON in Salvisa, who is my wife's fifth cousin. Since then, we have exchanged much information through the mail. She was in possession of valuable material previously unknown to us, and fortunately, we also were able to provide her with information unknown to her. We are looking forward to a visit in the Salvisa area in the near future.

Submitted by Charles Wm. Siddaway

"MIRACLE OF THE BELL"

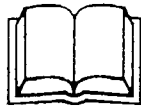
BALLAGH, COUNTY ROSCOMMON, IRELAND

On July 17, 1994 a plaque was hung on the bell tower of tiny St. Mary's Catholic Church in Ballagh, County Roscommon, Ireland. Over eighty years earlier, Patrick GANNON, who had been born in Weekfield, County Roscommon, had sent money from Brooklyn, New York where he had migrated, for a bell to be placed in St. Mary's Church in memory of his mother, Catherine CORCORAN GANNON (1834-1909). Until his death in 1950 at the age of ninety-four, Patrick had never really known if the bell existed.

In 1993, two of his granddaughters, Eileen MILES PEELER of Orlando, Florida and Rosemary MILES BLAIR of Princeton, New Jersey were traveling in Ireland and discovered that there was indeed a bell and that it had been rung all through the years. Sometime in the 1950's, a new church was built on the same site and the new bell was reinstalled in the tower where it now hangs. This building was a gift of the Kelly family of Philadelphia, Pennsylvania, whose most famous member is the late Grace KELLY, Princess of Monaco.

The plaque was given by Patrick GANNON'S granddaughters and his grandson, Dr. George G. MILES of Orlando to ensure that this loving memorial to a mother would never be forgotten.

Submitted by Dr. George G. Miles



BOOK REVIEW

KELLYS OF LOWNDES AND THEIR COUSINS

Author: Woodrow W. **KELLY**

Kelly Publications, 4934 S. Lake Ave., Freeland, WA 98249
(160 pp. No index. 8-1/2" x 11". Soft cover. No price given
Copyright 1987

Mr. **KELLY**'s book begins by putting to rest a couple of family legends. He proves that his great-grandfather **KELLY** of Lowndes County, Georgia, and his parents before him, were born not in Ireland, but in South Carolina. He also proves that his maternal great-grandfather **ATKINS** of Tallahassee, Florida, was not "a doctor who emigrated c. 1812 from Scotland," but was born in 1817 in South Carolina. With that out of the way, the reader is then showered with an abundance of names, dates and relationships, with many personal asides about the various families involved. Lowndes County lies on the southern border of Georgia, touching on the Florida counties of Madison and Hamilton and the families did a lot of moving back and forth between the two states. North Florida researchers might find this of interest. Unfortunately, the lack of an Index or charts to follow causes some confusion, but the Table of Contents does list all the major surnames discussed. They are **KELLY, TAYLOR, ATKINS, FENDER, COWART, DeLOACH, GEDDIE, NASH, PITTMAN, SMITH, MATHIS, REGISTER, STRINGER, TOUCHTON, HANCOCK, McLANE, HOLTZENDORFF, JONES** and **ALLEN**. There are many others mentioned in passing. It might be helpful to have a supply of blank family group sheets and pedigree charts at hand to fill out as you move through the pages.

Mr. **KELLY** dedicated this lovingly done family volume to his late brother, who started the project in 1950 and died in 1981. Taking up the torch, the author and his wife spent five years traveling through the South and Ireland, collecting an impressive amount of well-documented data for the book, which Mr. **KELLY** published in 1987 at the age of 70. Since his sudden death in 1991, his widow has been trying to disperse the remaining copies of the book to libraries, societies, etc. Her only suggestion for payment has been a \$2.00 donation for postage and handling. I don't know if she has any copies left, but she might have a list of the repositories chosen. Well worth an inquiry to her at phone number 206-331-4917 or the above address.

(Reviewed by Anne HAMMOND CONNELL)

RAILROAD HISTORICAL SOCIETIES

Erie Lackawanna

- Annual Dues: \$15
- Erie Lackawanna Hist. Soc.
c/o Tim Stuy
56-J Village Green
Budd Lake, NJ 07828



Great Northern

- Annual Dues: \$17.50
- Great Northern Ry. Hist. Soc.
1781 Griffith
Berkeley, MI 48072



RESEARCHING IN VIRGINIA

CFGS member Alice CREEL BALL has completed extensive Virginia and West Virginia genealogical research and has submitted the following information on researching in the state of Virginia.

1. EARL GREGG SWEM LIBRARY
College of William and Mary
Jamestown Road and Campus Drive
Box 8794
Williamsburg, VA 23187-8794
(804) 221-3508

Hours: Mon. thru Thurs. 8 a.m. to 12 p.m.
Friday 8 a.m. to 6 p.m.
Saturday 9 a.m. to 6 p.m.
Sunday 1 p.m. to midnight

Good parking is available (early in day) on side streets and in parking lots.

Very good motel accommodations in Williamsburg.
Historic Jamestown is 6 miles from Williamsburg.

Note: Orlando Public Library (Genealogical Collection) has the Virginia Historical Index by E. G. SWEM, four volumes. This is a detailed index of Virginia names to be found in various volumes of books on Virginia.

2. VIRGINIA HISTORICAL SOCIETY
Museum and Research Department
428 N. Boulevard (and Kensington)
P. O. Box 7311
Richmond, VA 23221-0311
(804) 358-4901

Hours: Monday thru Saturday 10 a.m. to 5 p.m.
Sunday 1 p.m. to 5 p.m.

Free Parking - Admission is \$3.00

The Virginia Historical Society holdings document the lives of all Virginians, rich and poor, men and women, whose stories form the collective chronicle of the state. Excellent card indexes for the very old records of Virginia ancestors.

RESEARCHING VIRGINIA (cont'd.)

3. VIRGINIA STATE LIBRARY AND ARCHIVES
11th Street, South and Capitol Square
Richmond, VA 23219-3491
(804) 786-2332

Hours: Monday thru Saturday 8:15 a.m. to 5 p.m.

Parking available on paid lots or on the street.
Restaurants within walking distance.

The Library has available (free of charge), printed
manuscript resources on film and in books.

Research fee of \$10.00 for replies on all out of state
requests.

4. PRINCE WILLIAM PUBLIC LIBRARY
8601 Mathis Avenue
Donald Wilson, Research Librarian
Manassas, VA 22111
(703) 361-8211

Hours: Mon., Tues. and Thurs.	10 a.m. to 9 p.m.
Wednesday	1 p.m. to 9 p.m.
Friday	1 p.m. to 5 p.m.
Saturday	10 a.m. to 5 p.m.
Sunday	closed

Free parking is available.

This library has a VIRGINIA ROOM for Genealogists with books
and microfilm collection for Prince William County and the
surrounding counties of Fairfax, Loudoun, Culpepper, etc.

Numerous Virginia Historical and Genealogical Societies (including
regional Genealogical Societies) are available to the researcher
for assistance including:

VA-NC-Piedmont Genealogical Society
Danville Public Library, Second Floor
P. O. Box 2272
Danville, VA 24541
(804) 799-5196, ext. 22

Hours: Search Room: Tuesday	2 p.m. - 5 p.m.
Thursday	6 p.m. - 9 p.m.
Friday	10 a.m. - 1 p.m.
	2 p.m. - 5 p.m.
Sat.	10 a.m. - 1 p.m.

My Daughter's First Car

by Helen STRUNK MOHR

(Ann MOHR OSISEK's paternal grandmother)

My husband and I thought we had left behind us cars like a high old Dodge and a Chevy with running boards, for updated modern road machines. But then our daughter bought her first car. It was at the end of World War II.

She found, hidden away in someone's barn, a fairly decent Model A Ford. It was high, old and fun and she named it "Josephine". Believe it or not, she and her friends traveled great distances to Cape Cod, Bar Harbor and Williamsburg in that car. Josephine needed only "an every 50 mile" gas check. The gas level was checked by dropping a yard stick into the tank to measure the remaining gas. That spaced with pit stops and lunch stops was to give the dear old girl a rest, time to cool off and catch her breath.

On an outing to see a play in Philadelphia, the girls were caught in a rainstorm. Necessity being the mother of invention, they opened an umbrella to keep dry. The top of Josephine wasn't very well dressed or top-coated.

Once in a while, my daughter would take me on one of her jaunts and I can truthfully say it was not to my liking. It was a high step up and a bone rattling ride. And the stares! Getting into Josephine all dressed up and pulling out with all those Buicks, Cadillacs, etc. wasn't my idea of class. But looking back, it was so-o-o-o enjoyable!

1911 Ford advertisement

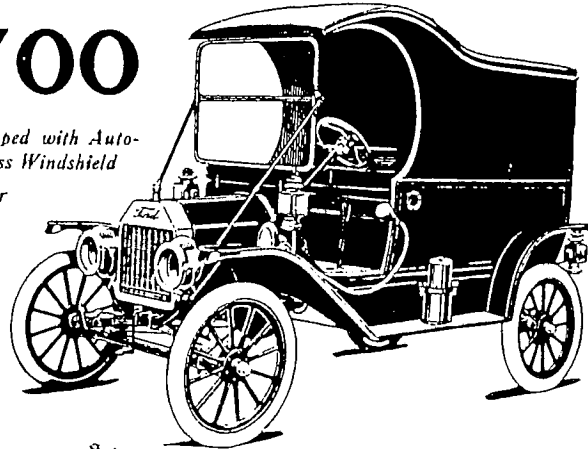
Demand for Ford
Cars Doubles
Annually



1911
100,000 Ford
Cars Are in Ser-
vice Now

Model T Delivery Car

\$700



Fully Equipped with Auto-
mobile Brass Windshield
Speedometer
Three Oil
Lamps
Two Gas
Lamps.
Generator
Horn
Tools

\$590



1911 FORD Model T Torpedo

4 Cylinders, 2 Passengers
Completely equipped as follows:
Extension Top, Speedometer
Automatic Brass Windshield

Two 6-inch Gas Lamps, Generator
Three Oil Lamps
Horn and Tools
Ford Magneto built into the motor
This car thus fully equipped for \$590, F. O. B. Detroit

1926 Ford advertisement

BEAUTY-COMFORT

Ford

Today's High Peak in Motor Car Value

DISPLAY rooms of all Authorized Ford Dealers are thronged with those eager to see the latest Ford body types. Admiration for these attractive cars is expressed everywhere. The low stream-line bodies, the increased roominess, the greater riding comfort and the many convenient new features are advantages which are widely welcomed and appreciated.

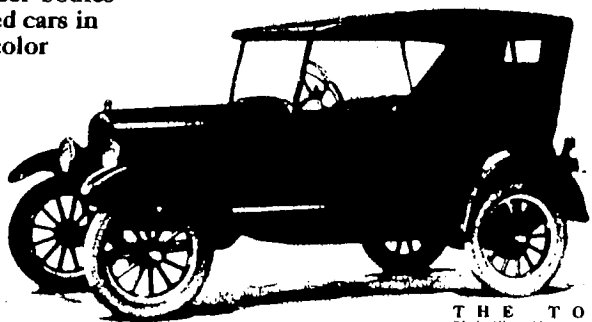
The fact that all this has been accomplished without raise in price is even

FORD MOTOR COMPANY DETROIT

more impressive. Ford value, for years holding unchallenged leadership in the motor car market, now reaches a new high peak, through Ford production—its volume and economy of manufacturing methods.

Demand for Ford cars has exceeded all previous records during summer months. Now it is sure to outstrip even the huge production Ford facilities permit.

All-steel bodies
Closed cars in
color



THE TOURING
Black. All-steel body. One-man top. Worn floor proof side curtains opening with all four doors. Four cord tires, nickel head lamp rims, wind shield wiper. Also optional demountable rims \$45 extra. Balloon tires \$25 extra. Price \$290 J. O. B. Detroit.

1926 Ford advertisement

CONVENIENCE-UTILITY

for BEAUTY

Chassis has been lowered; bodies have also been lowered and lengthened. This stream-line effect is further emphasized by the raising of radiator and head lamps.

Closed bodies in color are unusually pleasing; the Fordor Sedan comes in a rich Windsor Maroon, while the Coupe and Tudor Sedan are finished in deep Channel Green; new and finer upholstery gives an artistic harmony to the whole car.

Bright nickel radiator and head lamp rims feature closed cars. On open cars, head lamp rims are also nickel.

Fenders are larger, longer and more attractive, conforming to stream-line treatment. The hood also is longer; louvers on sides are redesigned and increased in number.

Rear deck of both the Coupe and Runabout has a full sweep of line which greatly improves these cars' appearance.

for COMFORT

Seats are set further back, lowered and redesigned to permit easy relaxation.

Lowering of the car's center of gravity tends to give greater sense of security and to increase roadability.

Improvement in both the transmission and rear wheel brakes, with wider drums and bands, makes braking smoother and more positive.

One-piece ventilating windshields in the Tudor Sedan and Coupe give greater visibility.

Running boards are wider and nearer the ground; doors are designed for easier entrance and exit.

for CONVENIENCE

In the Tudor Sedan, Coupe and open cars, gasoline tank is under the cowl and may be filled from the outside.

Brake and clutch pedals are wider and more conveniently spaced. Steering wheel is larger and lower.

Coil box and gasoline sediment bulb are placed under hood, where they may be more conveniently reached. Improved fan bracket simplifies adjustment of fan belt.

for UTILITY

Bodies of all-steel construction mean longer wear and lower upkeep.

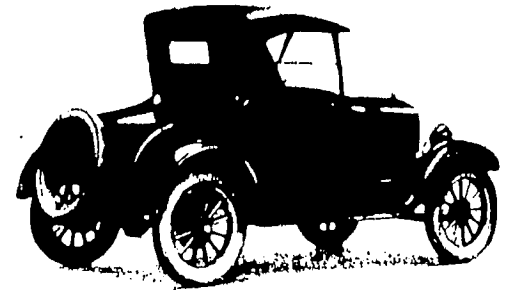
The Touring Car and Runabout have removable storm-curtain opening with all doors. Compartment space under the rear deck of the Coupe and Runabout has been greatly increased.

There is added capacity in the gasoline tank of the Tudor Sedan, Coupe and open cars.

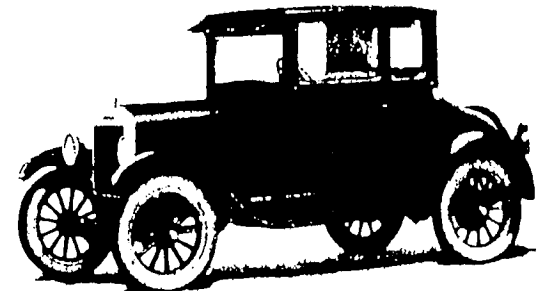
No increase in prices

THE TUDOR SEDAN
Channel Green. All-steel body. Nickel radiator and head lamp rims. Starter, demountable rims, four cord tires, windshield wiper, rear view mirror and dash lamp. Balloon tires \$25 extra. Price \$580 J. O. B. Detroit.

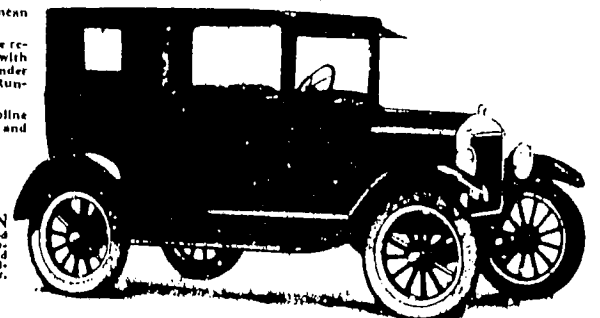
\$580



THE RUNABOUT
Black. All-steel body. Large compartment under rear deck. Weatherproof side curtains opening with both doors. Four cord tires, nickel head lamp rims, windshield wiper. Starter and demountable rims \$45 extra. Balloon tires \$25 extra. Price \$260 J. O. B. Detroit.



THE COUPE
Channel Green. All-steel body. Nickel radiator and head lamp rims. Large compartment under rear deck. Starter, four cord tires, demountable rims, windshield wiper, rear view mirror and dash lamp. Balloon tires \$25 extra. Price \$520 J. O. B. Detroit.



SPIRITS IN THE MOONLIGHT

By Richard A. Connell

For our journey to Scotland in June, 1994, we wanted a central location to stay for a week where we could "hub out" on day trips to see the interesting sites. So from a catalog of "self-catered farmhouses" I chose a "charming country cottage" on a farm called *Castlemains*, just west of Auchterarder, Tayside, about eighteen miles southwest of Perth and twenty miles northwest of Stirling on route A-9. The famous Gleneagles golfing center is nearby. It turned out to be much less than the glorious description in the catalog.

The farm lane into *Castlemains* was a good quarter of a mile of potholes, half-buried boulders and the occasional manure pile. We began to have a feeling of apprehension, heightened later by the shabby condition of the place. But the rent had been paid in advance and there was little we could do but make the best of it. Actually, once we gave it a good cleaning, it wasn't too bad -- even if the doorknobs did keep falling off. The lane (and the door to our abode) opened onto a rather messy barnyard, which was dominated by a strange and obviously ancient stone structure covered with ivy and weeds.

After settling in, my curiosity led me to ask Mr. Bayne, owner of the property, about this old ruin, which consisted of one very solidly-built room with two vacant windows, an arrow slot and an arched, nicely-carved doorway with a sagging wood door. On the outside, a curved stone stairway led to nowhere. My jaw literally dropped when he told me that it had been a favorite hunting lodge of Malcolm Canmore [Malcolm III (1031-1093), King of Scotland, who succeeded MacBeth to the Scottish throne in 1053.] Malcolm and Queen Margaret just happen to be my *29th great grandparents!* Sadly, the major part of the castle had been razed a few centuries ago by a later owner of the Castlemain lands to build the farm buildings all around us. The stone materials in the barns did bear an unsettling resemblance to those remaining in the old ruin.

Following are some historical accounts of the area which address the early royal beginnings of Auchterarder and the lodge or castle.

"ROYAL BURGH OF AUCHTERARDER. The town History.

"It is probable that Auchterarder owes its origin to King Malcolm Ceanmor (1052-93) whose love of hunting may have prompted him to come to Strathearn from Dunfirmline. From that time onward there were links between the Crown and the little town which have never been altogether severed: the King maintained a farm (hence "Kingswells") and by 1200 it had achieved the status of Royal Burgh. ... The castle, part of whose 9 feet thick walls remain today, was built by King Malcolm Ceanmor as a hunting seat. ..."

"AUCHTERARDER.

"At the northern end of the Ochils [The Ochil Hills] in this parish are several very old buildings. These are supposed by some to mark the sites of small Roman encampments, which were outposts of the great camp at Ardoch. Others are of opinion that these traces are much more probably the remains of British forts.

"The town of Auchterarder is venerable for its years. How many these number is not known; but the earliest extant notices of it lead us back from six to seven centuries. ..."

"A short way north of town is a very old ruin. Modern utilitarianism has sadly reduced its dimensions, by breaking down its walls, and putting the material of them to such base uses as building farm offices with it. But enough remains to show that the edifice must have been very strong, as well as very old. The

walls of it had been nine feet thick; and the cement with which they were built had compacted them so firmly that it must have required almost as much labour to break them down as would have digged an equal amount of stone out of nature's quarry. According to tradition, this structure was a hunting seat of Malcolm Canmore (1057 [sic]-1093); and if so, it is an Historic Scene of no ordinary interest. It may be regarded as perhaps somewhat confirmatory of the tradition, that a small copse wood which adjoined the locality was a Royal one. From his loved Dunfermline, Malcolm Canmore may have often crossed the Ochils to this castle, accompanied by his saintly Queen Margaret; and his sojourns in it would serve a vastly more important end than yielding him the pleasure of the chase. His little court would diffuse in the strath the most benign influence, tending both to humanitise and to Christianise it, in an age when there was the greatest need of both.

"The residence of Misses Malcolm, close by this old ruin, bears the name of Auchterarder Castle. We have not seen it stated whether these ladies trace their lineage from Malcolm of the Royal Castle, surnamed Ceanmohr or Great Head."¹

Our visit to Scotland fell in the third week of June and included the summer solstice - the longest of days. In that northern latitude, it never did get really dark at night. The sun set at about 10 PM and there followed a long cold twilight just dark enough to see the glittering stars and a beautiful full moon until about 3 AM when dawn broke. From the window of our upstairs bedroom could be seen, in the distance, the twinkling lights of the town of Crieff, eight miles away, tucked into the foothills of the snow-tipped Trossach Mountains.

Peering out that misty window when the moon was full and the air was crisp, one could well imagine the activities of nine centuries earlier in that castle. You just could almost see King Malcolm and his six sons on their horses, dressed for the hunt and smiling down at their beloved Queen Margaret or perhaps the whole family relaxing by the fire, reliving the hunt and other events of the day. It surely was a place of respite from the trials of State, the rigors of Court and the clash of Nations. No, I didn't really see any ghosts, but then there was this uncanny feeling ...

Richard A. Connell
July, 1994

¹ *Historic Scenes of Perthshire*, by William Marshall, 1880

Other reference:

The Annals of Auchterarder and Memorials of Strathearn, by Alexander George Reid, 1899.

>< >< >< >< >< >< >< ><

LOUISIANA

Origin of Name - In honor of King Louis XIV of France

Nickname - Pelican State

Joined the Union in 1812 (18th State)

Buried Treasures

>< >< >< >< >< >< >< ><

TENNESSEE

Origin of name - from Tennesse, name of leading Cherokee town.

Nickname - Volunteer State

Joined the Union in 1796 (16th State)



BOOK REVIEW

THE HISTORY OF WARREN COUNTY, OHIO

Author: W. H. **BEERS** & Co. - (1882) 2 Vol. reprint

A Facsimile Reproduction

Heritage Books, Inc., 1540-E Pointer Ridge Place, Bowie, MD 20716

Copyright 1994

(2 vols. 946 pp. Every-name Index. 5-1/4" x 8-1/4". Soft cover. \$52.00)

Warren County, Ohio, is the next county northeast of Cincinnati. In assembling the original edition of this work, the general history of the county was written by Josiah **MORROW**, who had for years been collecting everything he could get his hands on about his county before it was too late. Histories of the townships of Turtle Creek, Franklin, Wayne, Clear Creek, Hamilton, Deerfield, Massie, Salem, Harlan, Washington and Union were written by various locals and the biographical sketches were mostly gathered by the canvassing agents of the publisher.

In Volume 1 of this edition, Parts I and II have been omitted for the sake of economy. As "stock histories of the northwest territory and the state of Ohio," they are easily obtained elsewhere. In Part III, the History of Warren Co., almost everything one could ask for is covered, from prehistoric times right up to 1882. Included are schools, churches, graveyards, statistics, local color, countless lists of names (churches, soldiers, etc.), even biographical sketches of eighteen late citizens, called "The Distinguished Dead." Part IV covers the individual townships, plus many town histories and fifty very clear portraits, with signatures, of well-known local citizens - all men, of course, except for the wife of one of them. Throughout both books, there are also various illustrations and miscellaneous other items of interest. Volume 2 is devoted entirely to Part V, Biographical Sketches of the movers and shakers of the various townships; and the Index of about sixty-seven pages of names.

This is the kind of information that genealogists would die for. If you can't find that ancestor you're sure was in this part of Ohio, try this book.

(Reviewed by Anne HAMMOND CONNELL)

RAILROAD HISTORICAL SOCIETIES

Gulf Mobile & Ohio

- Annual Dues: \$15
- GM&O Hist. Soc., Inc.
PO Box 24
Chicago, IL 60499



Illinois Central

- Annual Dues: \$12.50
- IC RR Hist. Soc.
556 South Elizabeth Dr.
Lombard, IL 60148



HAYMAN, HENRY

Declaration to Obtain the Benefit of the Act of Congress
passed June 7th, 1834

State of Georgia

Irwin County

On this the six day of July 1835 personally appeared in open court before the Justices of the court of Irwin County now Henry Hayman a resident of the United States in the County of Irwin and state of Georgia aged seventy seven years who being first duly sworn according to law doth on his oath make the following declaration in order to obtain the benefit of the act of congress passed June 7th 1834 that he entered the service of the United States under the following named officers and served as herein stated.

There was Cirnal John Twiggs and Captain Fann I served myself as first leutinnant in captain Fanns company under the authority of a commission signed by cirnal John Twiggs. The period of this service was from January 1779 to the 1 day of March in 1779 and after Ashes defeat we had to leave the State and go to south carloinna my station in the above service was at Burk County Jailin the state of georgia.

On the 15th day of March in 1779 I turned my self to a vollonteer company of of cavalry commanded by Captain Shadrack onman in Twiggs Regiment I served my self as a private in said company and was stationed at a place called Demmerrys ferry on Savannah River from the 15 day of march 1779 till the first of January 1781 the general circumstances of my service was that we was sent in partys some times in georgia and some times in south carloinna and we was often ingaged with the enemy but not in any general ingagements with them as we was in small companys often the Brittish got possesion of charlestown in south carloinna Cirnal John Twiggs left this station and marched to north carloinna to a place called Cowpens at that place I was wounde4d in the leg in a battle that morgan had with Tatton and before my leg got well peace was made and I did not get my discharg from my services. I was a resident in the united states in the state of georgia in the county of Burk when I entered the service and was a volunteeer and was in a battle at Burk jail and one at the fork of savanna river and our creek one at dennys ferry one at the Cross Rodes and one at ediasto I marched through a great part of south carloinna and georgia and sirved with continental troups commanded by general albert nagor Habersham

I hereby relinquishes every claim whatever to a pension or annuity except the present and declares that his name is not on the pension roll of the agency of any state

Sworn to and subscribed the day and year aforesaid

his
Henry X Hayman
mark

We William A. Knight a clergeman residing in the state of georgia and Benjamin Griffin residing in the same hereby certify that we are well acquainted with Henry Hayman who has subscribed and sworn to the above declaration that we believe him to be 77 years of age that he is reputed and believe d in the neighborhood where he

resides to have been a soldier of the Revolution and that we concur in that opinion.

Sworn and subscribed the day and year aforesaid

William, A., Knight

Benjamin Griffin

* * * * *

Extract about HENRY HAYMAN from a book by Bobby Gilmer Moss

The Patriots at the Cowpens

HENRY HAYMAN

b 1758 Eastern Shore, Maryland.

Henry Hayman resided in Burke Co, Georgia, when he enlisted as a lieutenant under Capt Fanns (?) and Col Twigg in February 1779. He was stationed at Burke County Jail, but after Ashe's defeat he was forced to withdraw to South Carolina. On 15 March 1779, he joined a volunteer company of cavalry commanded by Capt Shadrack Inman and Col Twigg. He was in the engagements at Briar Creek, Medway and Edisto. Hayman was stationed at Dimmery's Ferry on the Savannah River (where there was a skirmish) and was there until 1 January 1781. His unit left this station and marched to join Morgan. Hayman was wounded in the leg during the battle of Cowpens. Before his leg healed, the war ended. He executed a pension application 6 July 1835 while residing in Irwin County, Georgia. The only child referred to was James a son. FPA R4798.

NORTH CAROLINA

Origin of Name - In honor of Charles I of England.

Nickname - Tar Heel State

Joined the Union in 1789 (12th State)

>< >< >< >< >< >< >< ><

TEXAS

Origin of Name - from the Indian meaning "Friends" or Allies"

Nickname - Lone Star State

Joined the Union in 1845 (28th State)

>< >< >< >< >< >< >< ><

**For the Want of a Map
A Reader was Lost**
by Ervin Patrick

Genealogy to all but the researcher or the true aficionado tends to be a tedious tale of names, places and dates in which most of the characters are dead. Yet each of us engaged in the research of an ancestral trail fervently hope that our siblings, our progeny or others who are related via the same chromosomal structures will be interested in our efforts. One of the better ways of inducing this interest is to appeal to one of the primal urges so inherent in most of the species. A person is not only a product of chromosomes, but also a product of the land. As well described in the musical **OKLAHOMA**, "We belong to the land. And the land we belong to is grand".

Therefore, in addition to Genealogy programs, History programs and Map programs add interest to the text and even aid in research. Following are four map programs which are a great help both in illustrating text and in genealogical research. They are:

<i>American History Atlas</i> AD 1492 - 1870	Parsons Technology	\$49.00
<i>Expert Maps</i>	Expert Software	\$14.50
<i>Millennium</i> AD 1000 - 1993	Clockwork Software	\$89.00
<i>AniMap</i> (County Boundaries by year)	The Gold Bug	

Region 1 = MA, RI, CT, MD, DE, ME, NH, VT, NJ, NY, PA, VA, WV

Region 2 = AL, FL, GA, KY, NC, SC, TN

Region 3 = IL, IN, IA, MI, OH, WI

Region 4 = AR, LA, MS, MO, OK, TX

Region 5 = KS, MN, MT, NE, ND, SD

Region 6 = AZ, CA, CO, ID, NV, NM, OR, UT, WA, WY

Basic package incl. US expansion by year + 1 Region	\$39.50
Each Additional Region	\$15.00
Master package incl. basic, US expansion by year, all 6 Regions	\$95.00

The first two, *American History Atlas* and *Expert Maps* can be purchased locally in any software store. Their primary value in genealogy is that they provide base maps to which you can add your own lines, text, symbols, etc. to illustrate your text. You can create maps showing ancestral homes and migration routes.

Millennium and *AniMap* can be ordered from the Goldbug, P. O. Box 588, Alamo, CA 94507-0588. Telephone number 510-838-MAPS. They can also be ordered via modem with a Visa or Mastercard number and expiration date to E-Mail: goldbug@aol.com OR Prodigy: SGMR50A OR Compuserv: 70303,2363. Their primary value is in research although they can also be used to illustrate map boundaries as of certain periods, such as the time of emigration. These

programs, unfortunately, can only export a map to the directory in which their programs are located. This means you will have to continuously clean up that directory. Hopefully, succeeding updates will permit an export to a destination of your choice.

Millennium provides full color maps which chronicle 10 centuries of European and Middle Eastern history. Boundary changes are shown year by year as countries and empires rose and fell. Narratives and headlines are available to explain events as they occur. By naming a person, place or event, the program will take you to a map of that era. Zoom in on a particular area and watch the map change as you move forward or backward year by year. You can print (or export in PCX or TIFF for use in your word processor) maps of a time and area.

AniMap displays over 2000 maps in color to show the changing county boundaries for each of the 48 contiguous states for every year since colonial times. A unique place marker permits you to mark a spot on a map and then move forward or backward year by year to show it as it changes county boundaries. Narratives are available to explain changes from a previous map making it easy to track parent counties. You can print (or export in BMP for use in your word processor) maps of a time and area. This is a great program and easy to use and if you export to and then print from your word processor, it is decent print. Unfortunately, if you print directly from the program, it resembles a 9 pin dot matrix regardless of your printer. One hopes that succeeding updates will utilize the TIFF & PCX formats as used in *Millennium*.

RAILROAD HISTORICAL SOCIETIES

Illinois Terminal Railroad

- Annual Dues: \$15
- IT RR Hist Soc.
P.O. Box 251
Washington, IL 61571



Illinois Traction

- Annual Dues: \$10 ret.; \$15 reg.; \$25 sust.; \$50 corp.
- The Illinois Traction Society
19 Sunset Acres
Farmersville, IL 62533



Kansas City Southern

- Annual Dues: \$15
- KCS Hist. Soc.
P.O. Box 5332
Shreveport, LA 71135-5332



Louisville & Nashville

- Annual Dues: \$12.50/\$25 sust. \$20 foreign/\$250 life
- L&N Hist. Soc.
PO Box 17122
Louisville, KY 40217



Milwaukee Road

- Annual Dues: \$14/\$28 sust
- Milwaukee Road Railfans Assoc
c/o Wendell Murphy
7504 W Ruby Ave
Milwaukee, WI 53218-5458



Missouri Kansas & Texas

- Annual Dues: \$15 (regular) \$13 (-18/65+) \$50 (supporting)
- KATY RR Hist. Soc.
c/o Roy V. Jackson II,
732 Via Miramonte, Mesquite, TX 75150



MP / TP

- Annual Dues: \$12 / \$17 contr. \$20 for
- Missouri Pacific Hist Soc
P.O. Box 187
Addis, LA 70710



Monon

- Annual Dues: \$10/\$15 sust.
- Monon RR Hist. & Tech. Soc., Inc.
c/o E.J. Lewnard
410 S. Emerson St.
Mt. Prospect, IL 60056





QUERIES



GENEALOGY COLUMN - I have saved many articles on genealogy written by Myra Vanderpool **GORMLEY** and will give them to anyone wanting to organize them to pass on to Buried Treasures or Treasure Chest News.

#590 - Elyzabeth H. **HEMPHILL**, 212 Apex Point, #106, Casselberry, FL 32707-6859



HARTZELL - Need info. on Jacob S. **HARTZELL**, b. 21 Dec 1837, PA; Adam and Susan **HARTZELL**, his parents, also born PA. All died Cleveland, OH and buried Riverside Cemetery.

JAQUES - William Ernest **JAQUES**, b. about 1861, MI. Need birth town and date; also date and location of death.

#714 - Lynne **JAQUES KNORR**, 1328 Dunsany Avenue, Orlando, FL 32806-1766



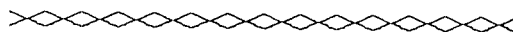
KEITH - Need info. on John and Eleanor **KEITH**'s parents. John **KEITH** b. 1814, d. 1873 in Altoona, PA; m. Eleanor Jane _____, b. 22 Nov 1818 in Lancaster Co., PA; d. 26 June 1889 in Altoona, PA. They had Susan K., Jennie S., Ellen, Harriet E., Andrew, Adam K., Samuel H., Harvey W., Elizabeth and Alexander. All born Altoona, PA

PATTON - Looking for Hannah's parents, husband, and Maryland location. Hannah _____ born c. 1785, m. _____ **PATTON** & has sons Matthew,

born c. 1813; James, born c. 1816; William, born c. 1827-32; and Henry, born c. 1832. Entire family was born in MD and moved to PA between 1832 and 1843.

REEDER / CROYLE - Need info. on Daniel **REEDER**'s parents. Daniel **REEDER** m. Susan **CROYLE**, born c. 1840 in Bedford Co, PA and has a daughter Emma Cordelia b. 23 May 1865 in Spruce Creek, Huntingdon Co., PA.

#783 - Kristal **REED**, 2740 Muscatello Street, Orlando, FL 32837



BUDD / McCRACKEN / WINNETT - Need info. on Hedessa "Hester" **BUDD** (9 Sep 1815 - 1 Jan 1904), who m. Lott **WINNETT** in Fallowfield Twp., Washington Co., PA (Aug 1837); her place of birth and death and anything on her parents - Joseph **BUDD** and _____? _____ **McCRACKEN**, both supposedly from Washington Co., PA

COOPER / SHEPLAR - Need info. on Solomon **COOPER** (c. 1805 - c. 1880) and wife, Margaret (or Rebecca) **SHEPLAR** (c. 1810 - ?); both lived entire life in Fallowfield Twp., Washington Co., PA; need birth, death, marriage dates and any info. on their parents or siblings.

WATKINS / REED - Need info. on W. H. **WATKINS** (20 Jul 1841 - 12 Sep 1892) of Washington Co., PA; his first & middle names, place of birth and death, parents names, anything on his wife, Nancy **REED** (I only know that she had a child in 1880 and was still alive in 1901).

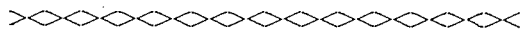


QUERIES



PHILLIPS / McKENDRIE / SHINN - Need info. on Melissa Jane **PHILLIPS** (Aug 1838 - 4 Feb 1919), who m. Dexter Lemuel **SHINN** in Fairmont, Marion Co., WV (c. 1860); her birthplace and anything on her parents - John **PHILLIPS** and Margaret **McKENDRIE**, both supposedly from Greene Co., PA

#934 - Jim **COOPER**, 2000 Augustine Drive, Titusville, FL 32796

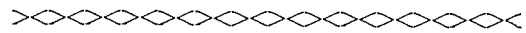


WAR BETWEEN THE STATES - When Anne **CONNELL** was researching at the Historical Society of PA in Philadelphia July 1993, librarian Dr. Dan **ROLPH** told her that he was working on a paper or book about life in the South during the War Between the States and would welcome any anecdotes, etc., anyone might want to send him. He says, "I am interested in any family stories, traditions, told or passed down orally in the family, concerning ancestors in the Confederate or Rebel army, and or experiences of family members at home, on the farm or plantation, while the husband was away in the army." His address is Dr. Dan **ROLPH**, 6332 E. Valley Green Road, Flourtown, PA 19031.



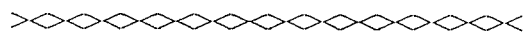
**THIS
SPACE
WAS
SAVED
ESPECIALLY
FOR
YOUR
QUERY!**

HOWARD - Doing research on the **HOWARD** family and are seeking any info. on individuals with the **HOWARD** surname. Any help would be greatly appreciated! If you have info. you would like to share, please send it to The Howard Historian, 2904 S.E. 35th Avenue, Portland, OR 97202-1802.



WESTON / WESSON / WHITNEY / LIBBY / PARKER - Someone used one of CFGS forms to correspond with Carolyn **NELSON** in Maine who is now deceased. There is no compiler information on the form (a copy of which I got from Mrs. Nelson's daughter). I need help on Mary **WESTON** m. Joel **WHITNEY**; Rebecca **WESTON** m. Reuben **LIBBY** and Josiah W. and Phebe **PARKER** with Joseph W. and Hannah **PARKER** as parents.

Contact Judith C. **ZERVAS**, 5261 Sierra Vista Avenue, Riverside, CA 92505-2512.



QUERIES - The majority of our members are non-Floridians, however, the *Central Florida Genealogical Society* welcomes queries concerning all geographical regions. **QUERIES** from non-members are accepted, although CFGS gives priority to dues-paying members. There are no restrictions on the number of queries submitted or the length of each query. However, CFGS reserves the right to edit queries for space and format.

Send in your queries **NOW** to be included in the next issue of *Buried Treasures*.



RECENT ACQUISITIONS -- ORLANDO PUBLIC LIBRARY

<u>TOPIC</u>	<u>TITLE</u>
Afro-Americans	Black Man's Dream, A
Alabama	Black Union Soldiers in the Civil War Compendium of the Confederate Armies: Alabama
American Indians	Register: Friendly Creek Indians of South Alabama and Northwest Florida 1890 Census of Chickasaw National, Indian National Book III: Panola and Tishomingo County and Other Records Gilmer's Georgians (Sketches of Early Settlers of Upper Georgia, the Cherokees and the Author) How to Research American Indian Blood Lines: A Manual on Indian Genealogical Research Kinsmen Through Time; An Annotated Bibliography of Potawatomi History Ottawa and Chippewas Indians of Michigan, 1855 - 1866 including Some Swan Creek and Black River of the Sac and Fox Agency Potawatomi Indians of Michigan, 1843 - 1904, Including Some Ottawa and Chippewa, 1843 - 1866 and Potawatomi of Indiana, 1869 - 1885 Register: Friendly Creek Indians of South Alabama and Northwest Florida Early Bermuda Records
Bermuda	
Britain	Researching British Probates, 1354 - 1858, Vol. 1, Northern England, Province of York
Canada	1848 and 1850 Canada West (Ontario) Census Index: An Every-Name Index Catalogue of Census Returns on Microfilm: 1901 Loyalists and Land Settlements in Nova Scotia Some Chapters in the History of Digby County, Nova Scotia and its Early Settlers
Civil War	Black Union Soldiers in the Civil War Compendium of the Confederate Armies: Alabama Compendium of the Confederate Armies: North Carolina Compendium of the Confederate Armies: Tennessee Compendium of the Confederate Armies: Virginia Doctors in Gray: The Confederate Medical Service General Officers of the Confederate Army North Carolina Confederate Militia Officers Roster North Carolina Troops, 1861 - 1865, a Roster, Vol. 13 Archer's Directory of Genealogical Software, 1993
Computers	
England	Universal British Directory of Trade, Commerce and Manufacture, 1793 - 1798
Family Histories	Ancestry and Descendants of Edward OLSON (born Olaus Edward THALLAUG , 1862 - 1946) and Ursula (Annie) KLEINHAUS , 1866 - 1944 Ancestry and Descendants of Ezra SISSON (1824 - 1898) and Amelia PLEMON (1828 - 1914) Plus Descendants of Elihu B. GIFFORD (1830 - 1898) Ancestry of Elihu B. GIFFORD (1830 - 1898) and Catherine SANDOW BARROWS (1835 - 1917 of Saratoga BLAKELY Family History BOLTZ-PULTZ-PULSE Family of America through Johann Michael BOLTZ Descendants of Reverend John GERRARD of Berkely Co., Virginia DIXON : A Pioneer Family in Florida FORTIER Family and Allied Families, The Edward FRISBIE of Branford and His Descendants HAVENS Family in Florida History of the LAMBERT Family, from Jugenheim in Rheinhessen HOLCOMBE-DOANE-HENKE Family History, 1812 - 1983, Vol. 1 HONEYCUTT Family Heritage



RECENT ACQUISITIONS -- ORLANDO PUBLIC LIBRARY

<u>TOPIC</u>	<u>TITLE</u>
Family Histories	<p>John KEY/KEAY of Maine and his Descendants LINDSAYS of America: A Genealogical Narrative and Family Record Ninth Booklet About Hannah. A On Our Family Tree PEARCE Family Organizations Bulletins. 1965 - 1992 Reluctant King: The Life and Reign of George VI, 1895 - 1952 Richard TULLIS Family of Columbiana County, Ohio SCHREIBER Family from Indiana: A Genealogical Memoir of August SCHREIBER, Immigrant from Germany and his Descendants Stephan TRACHSEL-TROXELL Family: 1536 - 1977 TUGWELL and FINCH Families of Tennessee and Allied Families of Virginia and North Carolina, 1635 - 1993</p>
Florida	<p>Cemeteries of Sarasota County, Florida, a Record of Births, Deaths and Burials Chronology of Florida Post Offices DIXON: A Pioneer Family in Florida Florida National Guard Alphabetical Mobilization Roster, 25 November 3r 1940: a Special Archives Publication HAVENS Family in Florida Marion County, Florida Marriages, 1844 - 1900 Including Alachua County, Florida, 1837 - 1845 Register: Friendly Creek Indians of South Alabama and Northwest Florida</p>
Genealogy Research	<p>Atlas of the Austro-Hungarian Empire, 1892 Encyclopedia of Frontier Biography How to Publish and Market Your Family History Searching for Lost Ancestors: A Guide to Genealogical Research Syllabus for the Eleventh Annual Priesthood Genealogy Seminar, Vol. 2 Two Hundred Years of U.S. Census Taking: Population and Housing Questions, 1790 - 1990 Where to Look for Hard-to-Find German Speaking Ancestors in Eastern Europe</p>
Georgia	<p>Georgia War Soldiers' Graves, Vol. 1 and 2 Gilmer's Georgians (Sketches of Early Settlers of Upper Georgia, the Cherokees and the Author) Primitive Baptist Association Minutes of the U.S., Vol. 1, Book 1-1, Alabaha Assoc. of Georgia, 1846 - 1941; Book 1-2 Ocmulgee Assoc. of Georgia, 1810 - 1947 Some Georgia County Records Survey of Irwin County, Georgia Cemeteries</p>
Germany	<p>Address Book for Germanic Genealogy (5th Edition) Atlas of the German Empire, 1892 German Immigrants - Lists of Passengers Bound from Bremen to New York, 1868 - 1871 Germans to America, Vols. 36 and 37 SCHREIBER Family from Indiana: A Genealogical Memoir of August SCHREIBER, Immigrant from Germany and his Descendants They Came in Ships Where to Look for Hard-to-Find German Speaking Ancestors in Eastern Europe</p>
Greeks Hungary Immigration	<p>Tracing Your Greek Ancestry Contents and Addresses of Hungarian Archives Directory of Scottish Settlers in North America, 1625 - 1825, Vol. VIII German Immigrants - Lists of Passengers Bound from Bremen to New York, 1868-1871</p>



RECENT ACQUISITIONS -- ORLANDO PUBLIC LIBRARY

<u>TOPIC</u>	<u>TITLE</u>
Indiana	Potawatomi Indians of Michigan, 1843 - 1904, Including Some Ottawa and Chippewa, 1843 - 1866 and Potawatomi of Indiana, 1869 - 1885 SCHREIBER Family from Indiana: A Genealogical Memoir of August SCHREIBER . Immigrant from Germany and his Descendants
Italy	Finding Italian Roots, the Complete Guide for Americans
Jewish	Dictionary of Jewish Surnames from the Russian Empire
Kansas	Abandoned & Semi-Active Cemeteries
Lineage Societies	Index to Hidden Lineages in the D.A.R. Lineage, Vols. 151 - 166 Mayflower Families Through Five Generations, Vol. 5 - Two Families Mayflower Families Through Five Generations, Vol. 6 - Stephen HOPKINS Mayflower Families Through Five Generations, Vol. 7 - Peter BROWN
Louisiana	Land Records of the Attakapas District, Vol. 1, Land Grants, Claims and Confirmations in the Attakapas District, 1764 - 1826
Maine	John KEY/KEAY of Maine and his Descendants Maine Historical Magazine Penobscot Pioneers, Vol. 1 Penobscot Pioneers, Vol. 2 Penobscot Pioneers, Vol. 3 Vital Records of North Yarmouth, Maine
Maryland	Maryland Calendar of Wills, 1753 - 1760, Vol. 11 Maryland Calendar of Wills, 1759 - 1764, Vol. 12 Maryland Calendar of Wills, 1764 - 1767, Vol. 13 Old Line State: A History of Maryland
Massachusetts	Vital Records of Marshfield, Massachusetts Vital Records of Yarmouth, Massachusetts
Michigan	Ottawa and Chippewa Indians of Michigan, 1855 - 1866 including Some Swan Creek and Black River of the Sac and Fox Agency Potawatomi Indians of Michigan, 1843 - 1904, Including Some Ottawa and Chippewa, 1843 - 1866 and Potawatomi of Indiana, 1869 - 1885
Military	Distant Patrol: Virginia and the Vietnam War Florida National Guard Alphabetical Mobilization Roster, 25 November 1940; a Special Archives Publication How to Locate Anyone Who is or Has Been in the Military (5th Edition)
Miscellaneous	Death Notices from Freewill Baptist Publications, 1811 - 1851
Mississippi	1890 Census of Chickasaw National, Indian National Book III: Panola and Tishomingo County and Other Records Mississippi Will Index, 1800 - 1900
Missouri	Heritage of Buchanan County, Missouri, The History of Southeast Missouri Embracing an Historical Account of the Counties of Ste. Genevieve, St. Francois, Perry
New Hampshire	Inhabitants of New Hampshire
New Mexico	Historical Atlas of New Mexico
New York	Albany Protocol: Wilhelm Cristoph Berkenmeyer's Chronicle, New York Colony, 1731 - 1750 Early Settlers of New York State, Their Ancestors and Descendants Guide to the Manuscript Collection of the Goshen Library and Historical Society New York Atlas of Historical County Boundaries Staten Island Wills and Letters of Administration, Richmond County, New York, 1670 - 1800



RECENT ACQUISITIONS -- ORLANDO PUBLIC LIBRARY

<u>TOPIC</u>	<u>TITLE</u>
New York	Tombstone of the Irish Born: Cemetery of the Hold Cross. Flatbush, Brooklyn
North Carolina	Compendium of the Confederate Armies: North Carolina Early Records of North Carolina. Vols. 3 & 4 Heritage of Randolph County. North Carolina. Vol. I, 1993 North Carolina Confederate Militia Officers Roster North Carolina Troops, 1861 - 1865. a Roster. Vol. 13 Northern North Carolina Graveyards and Cemeteries Public Address, Letters and Papers of William Bradley UMSTEAD , Governor of North Carolina, 1953 - 1954 TUGWELL and FINCH Families of Tennessee and Allied Families of Virginia and North Carolina, 1635 - 1993
Northeastern States	New England Vital Records from the Exeter Newsletter, 1831 - 1840 New England Vital Records from the Exeter Newsletter, 1841 - 1846
Norway	Genealogical Maps and Guide to the Norwegian Parish Registers
Ohio	Atwater and Vicinity. Interments, Old Records, History, 1874. Township Map, Atwater Township, Portage County, Ohio Auglaize County. Ohio Marriage Records: Books 1-7, (1848 - 1899) Richard TULLIS Family of Columbiana County, Ohio
Pennsylvania	Quaker Marriage Certificates: New Garden Monthly Meeting; Chester Co., Pennsylvania, 1704 - 1799
Quaker	Quaker Genealogies: A Selected List of Books Quaker Marriage Certificates: New Garden Monthly Meeting; Chester Co., Pennsylvania, 1704 - 1799
Reference	Directory of Archives and Manuscripts Repositories in the U.S. Directory of Historical Organizations in the United States and Canada World Almanac and Book of Facts 1994, The Women Patriots of the American Revolution: A Biographical Dictionary
Revolutionary War	Rhode Island Genealogical Register, Vol. 17
Rhode Island	South Carolina Deed Abstracts, 1773 - 1778
South Carolina	Death and Obituary Notices from the Southern Christian Advocates
Southeastern States	Genealogical Guidebook and Atlas of Sweden
Sweden	Compendium of the Confederate Armies: Tennessee Facts, Folks and Photos of Cumberland Co., Tennessee TUGWELL and FINCH Families of Tennessee and Allied Families of Virginia and North Carolina, 1635 - 1993
Tennessee	
Texas	Basic Texas Books: An Annotated Bibliography of Selected Works for a Research Library Guide to Texas Research
United States History	Peopling of British North America: An Introduction
Utah	Unitarianism in Utah: A Gentile Religion in Salt Lake City, 1891 - 1991
Virginia	Compendium of the Confederate Armies: Virginia Descendants of Reverend John GERRARD of Berkely Co., Virginia Distant Patrol: Virginia and the Vietnam War TUGWELL and FINCH Families of Tennessee and Allied Families of Virginia and North Carolina, 1635 - 1993
<i>NOTE:</i>	<i>The acquisitions listed above are from December, 1993, February and March 1994.</i>

GEOGRAPHICAL INDEX

CALIFORNIA

Alamo - 84
Riverside - 87

FLORIDA

Casselberry - 86
Hamilton Co. - 74
Madison Co. - 74
Orlando - 73, 75, 86
Tallahassee - 74
Titusville - 87

GEORGIA - 74, 82

Burke Co. - 82, 83
Irwin Co. - 82, 83
Lowndes Co. - 74

IRELAND - 73, 74

Ballagh - 73
County Roscommon - 73
Weekfield - 73

KENTUCKY

Salvisa - 73

MAINE - 87

Bar Harbor - 77

MARYLAND

Bowie - 81
Eastern Shore - 83

MASSACHUSETTS

Cape Cod - 77

MICHIGAN - 86

Detroit - 77, 78

MONACO - 73

NEW JERSEY - 73

Princeton - 73

NEW YORK - 73

Brooklyn - 73

NORTH CAROLINA - 76, 82

OHIO - 81

Cincinnati - 81
Clear Creek - 81
Cleveland - 86
Deerfield - 81
Franklin - 81
Hamilton - 81
Harlan - 81
Massie - 81
Salem - 81
Turtle Creek - 81
Union - 81
Warren Co. - 81
Washington - 81
Wayne - 81

OREGON

Portland - 87

PENNSYLVANIA - 86, 87

Altoona - 86
Bedford Co. - 86
Fallowfield Twp. - 86
Flourtown - 87
Greene Co. - 87
Huntingdon Co. - 86
Lancaster Co. - 86

PENNSYLVANIA - cont.

Philadelphia - 77, 87
Spruce Creek - 86
Washington Co. - 86

SCOTLAND - 74, 79, 80

Auchterarder - 79, 80
Crieff - 80
Dunfirmline - 79, 80
Perth - 79
Perthshire - 80
Stirling - 79
Strathearn - 79, 80
Tayside - 79

SOUTH CAROLINA - 72,

74, 82, 83
Barnwell Co. - 72
Winton Co. - 72

UNITED STATES - 82

VIRGINIA - 75, 76

Culpepper Co. - 76
Danville - 76
Fairfax Co. - 76
Jamestown - 75
Loudon Co. - 76
Manassas - 76
Prince William Co. - 76
Richmond - 75, 76
Williamsburg - 75, 77

WASHINGTON

Freeland - 74

WEST VIRGINIA - 75

Fairmont - 87
Marion Co. - 87

SURNAME INDEX

<p>Allen - 74 Ashe - 82, 83 Atkins - 74</p> <p>Ball - 75 Bayne - 79 Beers - 81 Blair - 73 Budd - 86</p> <p>Canmore - 79, 80 Ceanmor - 79 Connell - 74, 79, 81, 87 Cooper - 86, 87 Corcoran - 73 Cowart - 74 Creel - 75 Croyle - 86</p> <p>DeLoach - 74 Duncan - 72</p> <p>Eaves - 72</p> <p>Fann - 82, 83 Faunt - 72 Fender - 74</p> <p>Gannon - 73 Geddie - 74 Gormley - 86 Griffin - 82, 83</p> <p>Habersham - 82 Hammond - 74, 81</p>	<p>Hancock - 74 Hartzell - 86 Hayman - 82, 83 Hemphill - 86 Holtzendorff - 74 Howard - 87</p> <p>Inman - 82, 83</p> <p>Jaques - 86 Jones - 74</p> <p>Keith - 86 Kelly - 73, 74 Kilpatrick - 72 Knight - 82, 83 Knorr - 86</p> <p>Libby - 87</p> <p>Marshall - 80 Mathis - 74 McCracken - 86 McKendrie - 87 McLane - 74 Miles - 73 Mohr - 77 Morgan - 83 Morrow - 81 Moss - 83</p> <p>Nash - 74</p> <p>Parker - 87 Patrick - 84</p>	<p>Patton - 86 Peeler - 73 Phillips - 87 Pittman - 74 Preston - 73</p> <p>Reed - 86 Reeder - 86 Register - 74 Reid - 80 Reynolds - 72 Rolph - 87</p> <p>Sheplar - 86 Sherman - 72 Shinn - 87 Siddaway - 73 Smith - 74 Stringer - 74 Strunk - 77 Swem - 75</p> <p>Taylor - 74 Touchton - 74 Twiggs - 82, 83</p> <p>Watkins - 86 Wesson - 87 Weston - 87 Whitney - 87 Winnett - 86 Woodward - 72</p> <p>Zervas - 87</p>
--	--	--

CENTRAL FLORIDA GENEALOGICAL SOCIETY, INC

P. O. Box 177

Orlando, Florida 32802-0177

ORGANIZED - The Central Florida Genealogical and Historical Society, Inc. was formed in 1969 and incorporated as a non-profit organization in 1981. The Society welcomes everyone with an interest in genealogy, the history of Florida and the United States as well as our ancestral nations, to further our objectives thru education and publications.

MEETINGS - Regular monthly meetings are held on the second Thursday, September thru May, 7:30 P.M. at the Marks Street Senior Center Auditorium, 99 E. Marks Street, Orlando, Florida. Exceptions to the date and place for meetings are designated by the President. All meetings are open to the public, visitors are welcome and members are encouraged to bring guests.

MEMBERSHIP

Individual member = \$20.00

Family membership = \$25.00

Membership begins the first day of the month, following acceptance and extends for one full year, and includes a subscription to the following Society publications:

Buried Treasures, a quarterly publication, featuring 24 pages of articles, book reviews, bible records, old letters, wills, etc. submitted by members.

Treasure Chest News, a newsletter published eight times a year (each issue is 8-10 pages in length), includes Society news, genealogy tips, dates of workshops/conferences, etc.

For further information regarding membership, please write to
CFGS, Inc., P. O. Box 177, Orlando, FL 32802-0177

All members of the Publications Committee are volunteers who support each other, where needed, in various staff positions. The Committee meets monthly at the Orlando Public Library.

Permission is granted to quote or reprint any article or other material, either in whole or in part, provided credit is given to the Central Florida Genealogical Society, Inc., '**BURIED TREASURES**' (including author, volume and date citation).

The **Central Florida Genealogical Society, Inc.** disclaims responsibility for statements, whether in fact or of opinion, made by contributors.

BURIED TREASURES cover was designed (1989) by Gina Simmons **HERBERT**



Central Florida Genealogical Society

Buried Treasures

P. O. Box 177

Orlando, Florida 32802-0177

NON-PROFIT ORG
U.S. POSTAGE
PAID
ORLANDO, FLORIDA
PERMIT NO. 1529

